

## Specifications

**Eave height:**  
4.00m

**Span width:**  
15.00m

**Ridge height:**  
10.15m

**Bay distance:**  
5.00m

**Roof pitch:**  
0°

**Number of gable uprights:**  
2 Gable upright (per end)

**Longest component:**  
5.00m

**Minimum length:**  
15.00m

**Maximum length:**  
15.00m

**Max allowed wind speed:**  
102 km/h (0.50kN/m<sup>2</sup>)

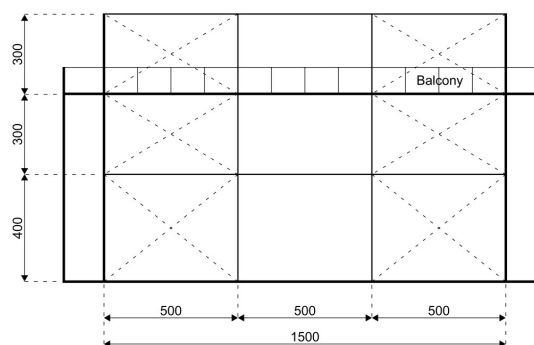
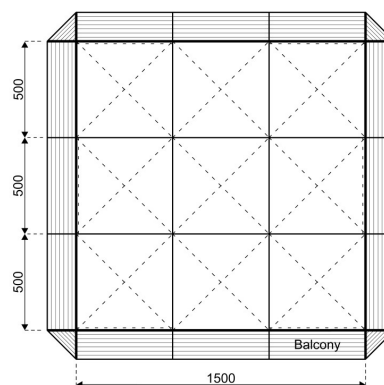
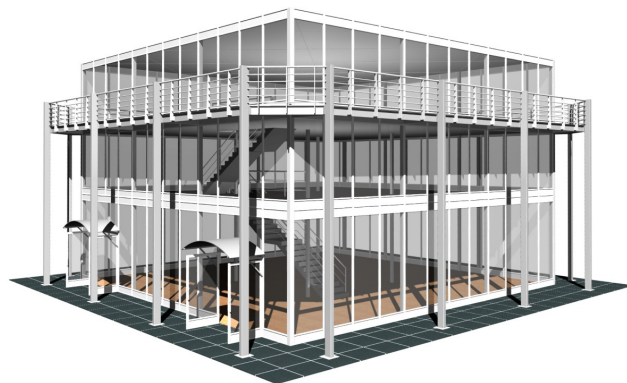
**Main profile size:**  
334/122/8/4.5mm (4-channel)

**Eave connection type:**  
Galvanised steel twin plate

**Aluminium type:**  
European - Hard Pressed Extruded Structural Aluminium

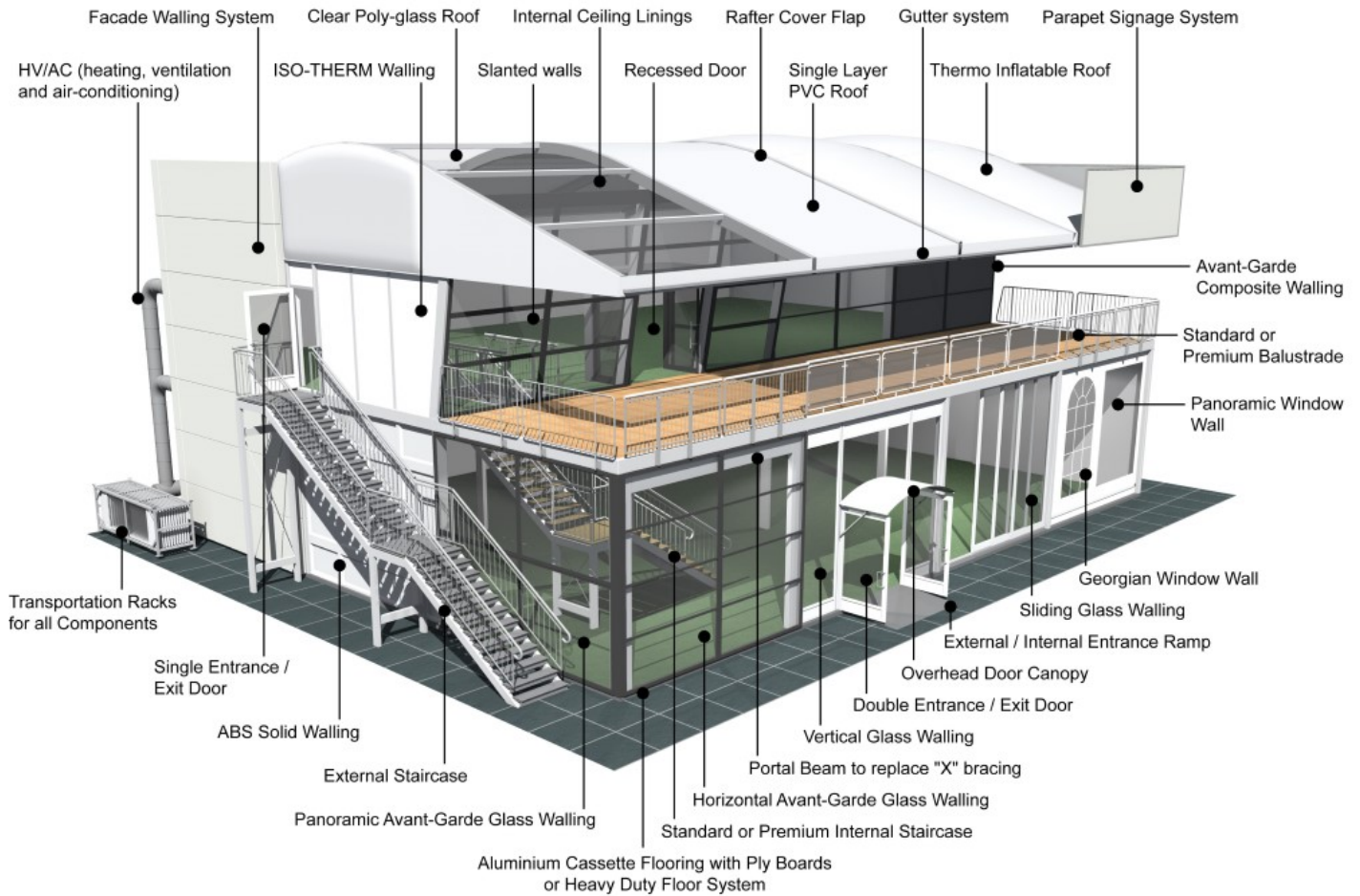
**Connecting components:**  
European - hot dipped, structural grade corrosive resistant galvanised steel

**Roof covering type:**  
Premium grade, high gloss white, PVC coated polyester fabric - UV resistant and flame retardant according to: DIN 4102 B1, M2; BS 5438/7837; USA NFPA701.



HTS tentiq disclaim any and all liability for any errors, inaccuracies or incompleteness contained in any datasheet on this website. All product, product specification and data are subject to change without notice to improve reliability, function or design or otherwise.

## Accessories



HTS tentiq disclaim any and all liability for any errors, inaccuracies or incompleteness contained in any datasheet on this website. All product, product specification and data are subject to change without notice to improve reliability, function or design or otherwise.