

Specifications

Eave height:
2.40m

Span width:
10.00m

Ridge height:
4.23m

Bay distance:
3.09m

Roof pitch:
20°

Longest component:
5.37m

Minimum length:
4.95m

Maximum length:
4.95m

Max allowed wind speed:
80 km/h (0.30kN/m²)

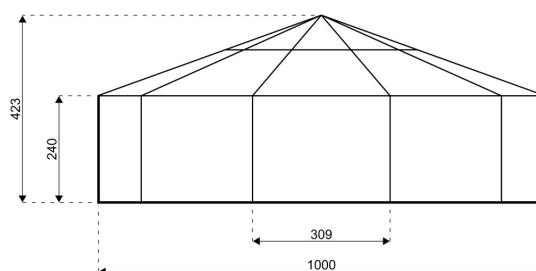
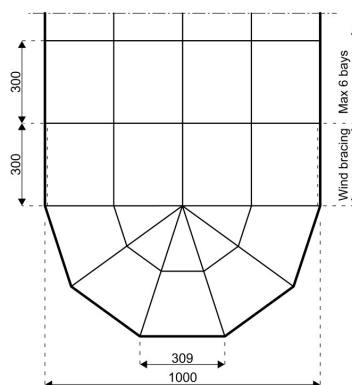
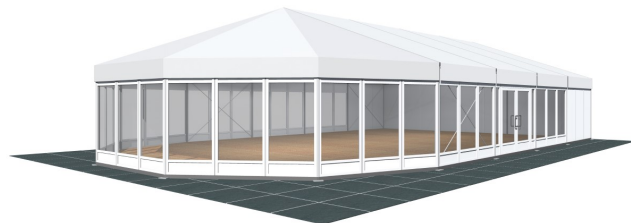
Main profile size:
89/48/3mm (2-channel) or 110/48/3mm (4-channel)

Eave connection type:
Internal Galvanised Steel Insert

Aluminium type:
European - Hard Pressed Extruded Structural Aluminium

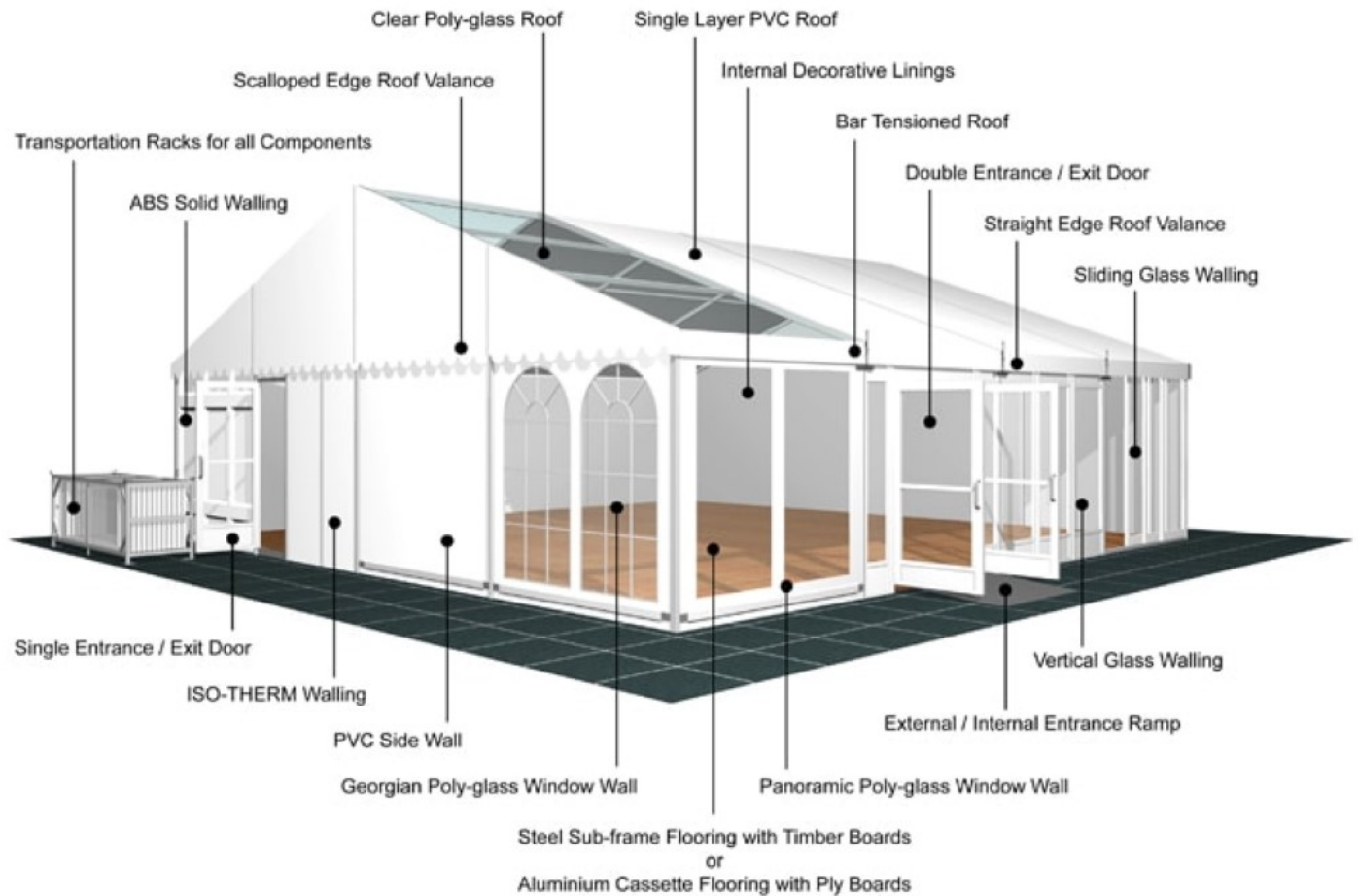
Connecting components:
European - hot dipped, structural grade corrosive resistant galvanised steel

Roof covering type:
Premium grade, high gloss white, PVC coated polyester fabric - UV resistant and flame retardant according to: DIN 4102 B1, M2; BS 5438/7837; USA NFPA701.



HTS tentiq disclaim any and all liability for any errors, inaccuracies or incompleteness contained in any datasheet on this website. All product, product specification and data are subject to change without notice to improve reliability, function or design or otherwise.

Accessories



HTS tentiq disclaim any and all liability for any errors, inaccuracies or incompleteness contained in any datasheet on this website. All product, product specification and data are subject to change without notice to improve reliability, function or design or otherwise.