

Specifications

Eave height:
2.30m

Span width:
6.00m

Ridge height:
3.38m

Bay distance:
3.00m

Roof pitch:
20°

Number of gable uprights:
1 Gable upright (per end)

Longest component:
3.50m

Minimum length:
As shown

Maximum length:
Unlimited in 3.00m increments

Max allowed wind speed:
80 km/h (0.30kN/m²)

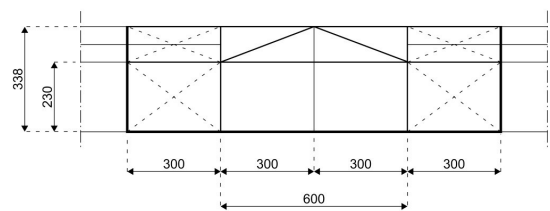
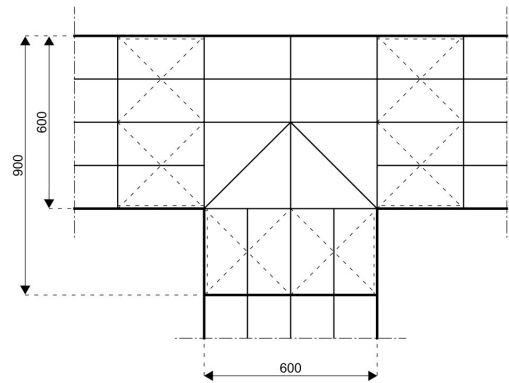
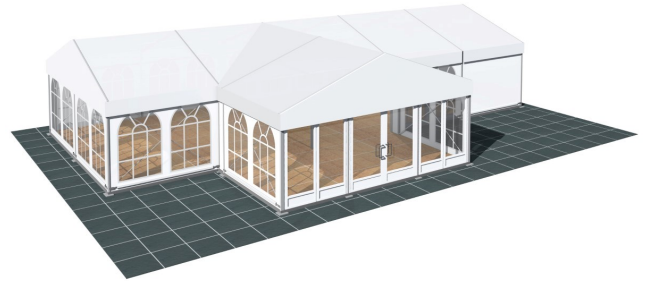
Main profile size:
94/48/3mm (3 or 4-channel) or 81/48/3mm (2-channel)

Eave connection type:
Internal Galvanised Steel Insert

Aluminium type:
European - Hard Pressed Extruded Structural Aluminium

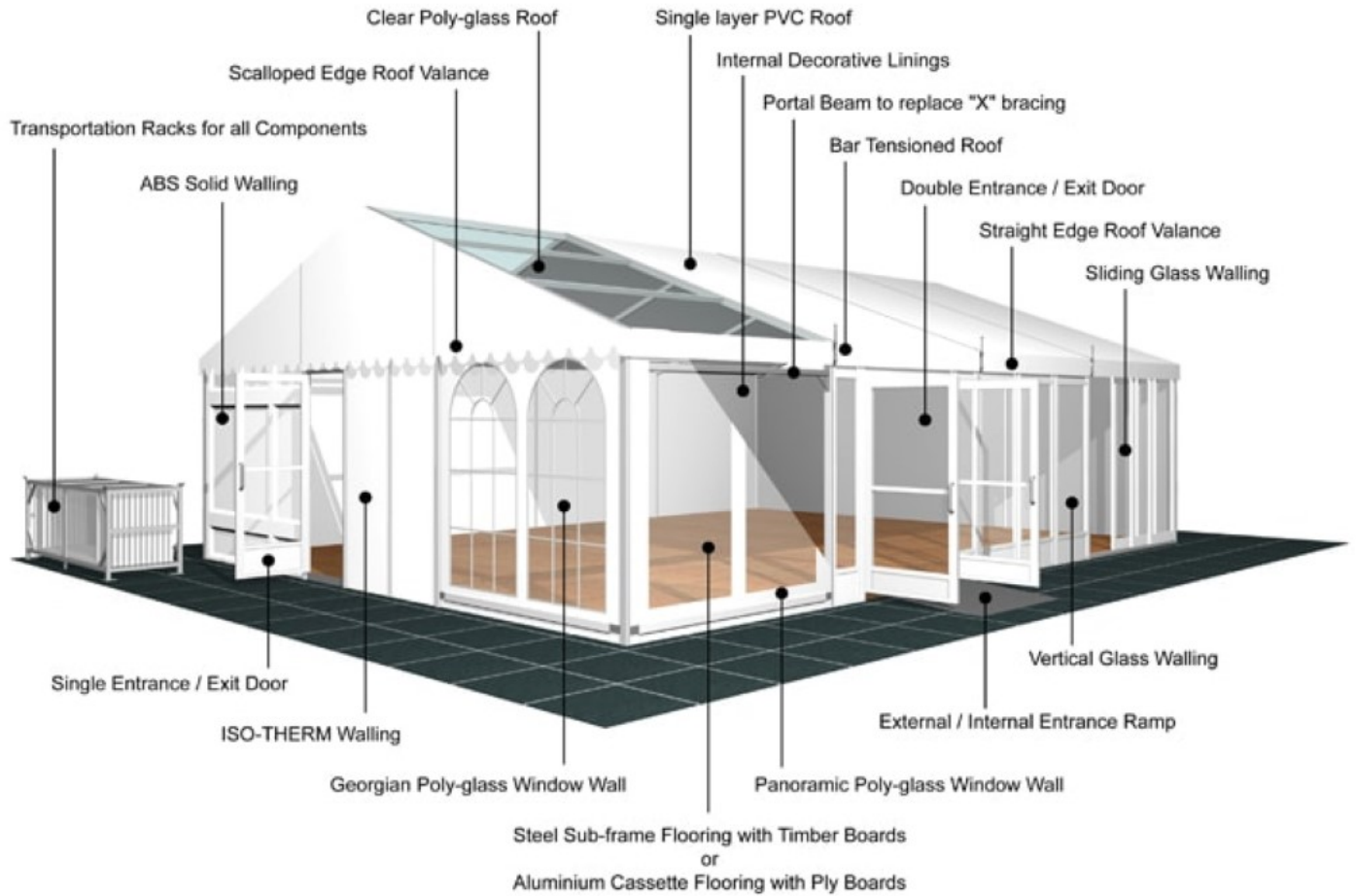
Connecting components:
European - hot dipped, structural grade corrosive resistant galvanised steel

Roof covering type:
Premium grade, high gloss white, PVC coated polyester fabric - UV resistant and flame retardant according to: DIN 4102 B1, M2; BS 5438/7837; USA NFPA701.



HTS tentiq disclaim any and all liability for any errors, inaccuracies or incompleteness contained in any datasheet on this website. All product, product specification and data are subject to change without notice to improve reliability, function or design or otherwise.

Accessories



HTS tentiq disclaim any and all liability for any errors, inaccuracies or incompleteness contained in any datasheet on this website. All product, product specification and data are subject to change without notice to improve reliability, function or design or otherwise.